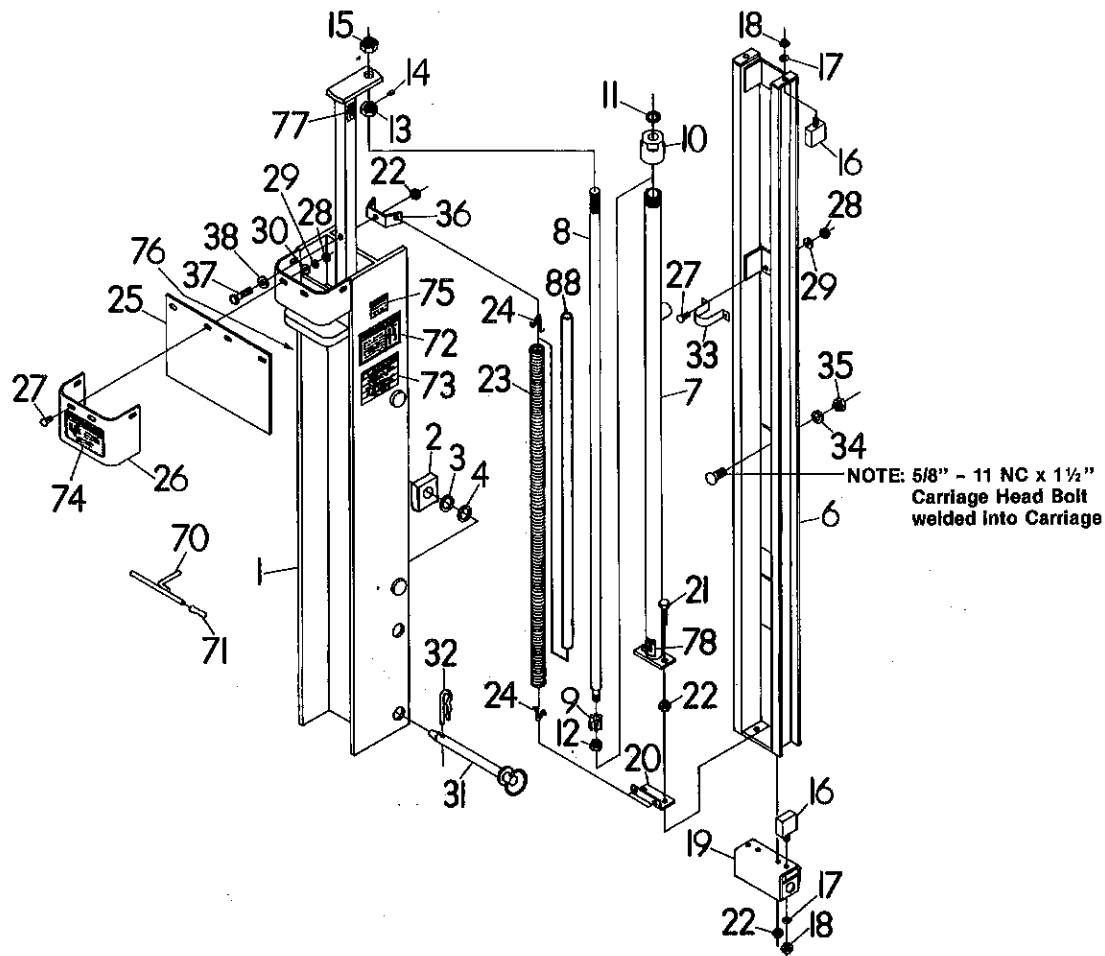


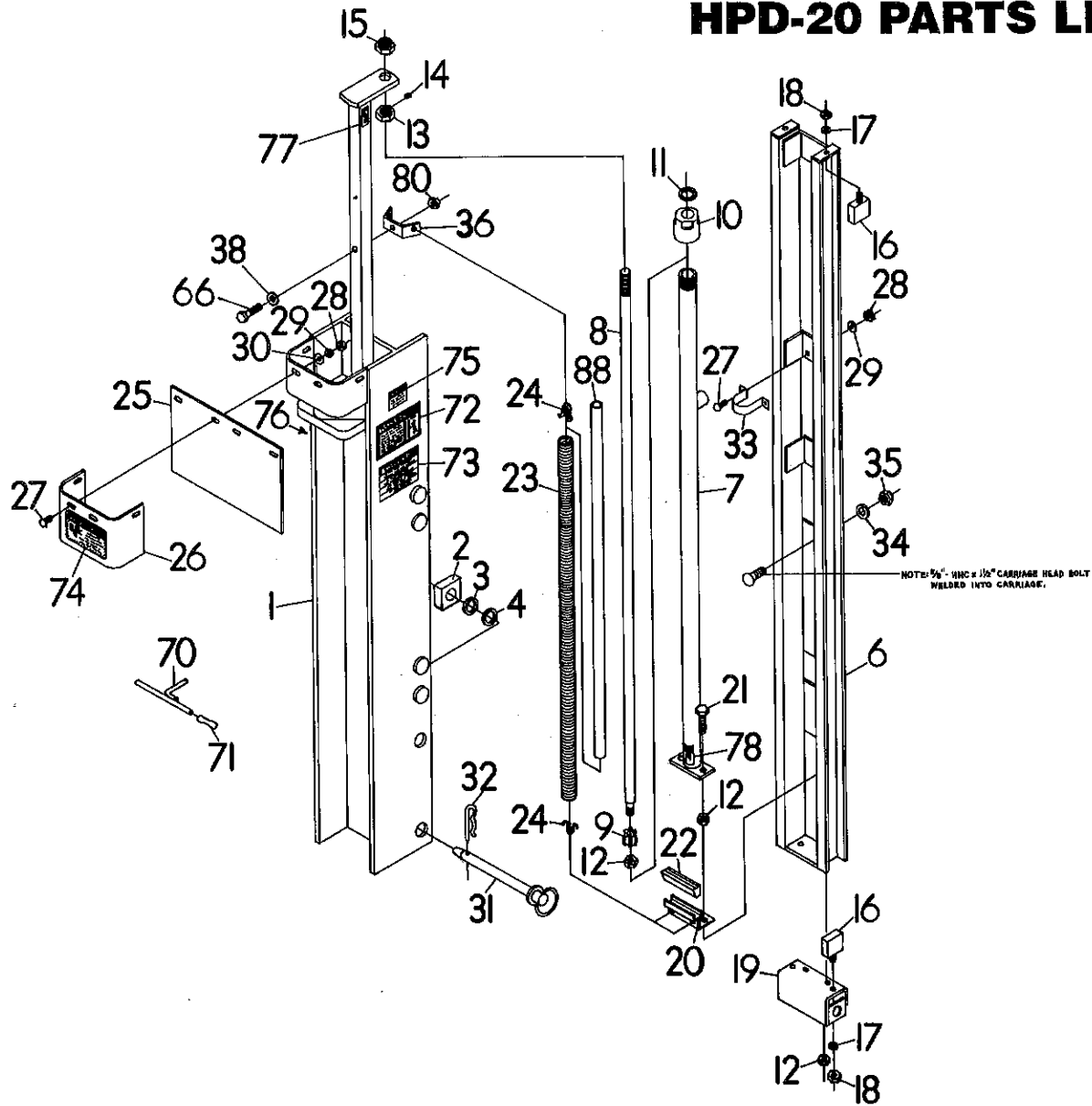
# HPD-16 PARTS LIST



REF. NO.	PART NO.	DESCRIPTION	NO. REQ.
1	814401	Driving Ram (HPD-16)	1
2	814551	Channel Guide (HPD-16)	4
3	2504132	Machinery Bushing, 18 ga. 1" I.D.	Var.
4	2504110	Machinery Bushing, 14 ga. 1" I.D.	Var.
6	814411	Carriage Weldment (HPD-16)	1
	814478	Complete Cylinder Assembly (Includes items 7 thru 15)	1
7	814417	Tube, Hydraulic Cylinder (HPD-16)	1
8	814421	Rod, Hydraulic Cylinder (HPD-16)	1
9	814422	Rod Guide, Hydraulic Cylinder	1
10	814495	End Cap with Rod Seal (HPD-16)	1
11	814424	Rod Seal (only) (HPD-16)	1
12	2500054	Nut, 1/2" - 13 NC Stamplock Hex	1
13	814425	Nut, 3/4" - 10 NC (Drilled & Tapped)	1
14	2503196	Set Screw, 1/4" - 20 NC x 1/4"	1
15	2500037	Nut, 3/4" - 10 NC Nylock Hex	1
16	814426	Bumper, Urethane	4
17	2502008	Washer, 3/8" Springlock	4
18	2500004	Nut, 3/8" - 16 NC Full Hex	4
19	814427	Bracket, Transport Lock (HPD-16)	1
20	814430	Bracket, Lower Spring (HPD-16)	1
21	2503198	Bolt, 3/8" - 16 NC x 2" Hex Head, Grade 8, Full Thread	2
22	2500055	Nut, 3/8" - 16 NC Stamplock Hex	5
23	814431	Spring, Driving Ram (HPD-16)	2
24	814432	Clip, Spring (HPD-16)	4

REF. NO.	PART NO.	DESCRIPTION	NO. REQ.
25	814433	Rubber Guard (HPD-16)	1
26	814434	Guard Retainer (HPD-16)	1
27	2503110	Bolt, 5/16" - 18 NC x 1" Carriage Head	6
28	2500011	Nut, 5/16" - 18 NC Full Hex	6
29	2502011	Washer, 5/16" Springlock	6
30	2501012	Washer, 5/16" Flat	4
31	814488	Pin, Transport Lock (HPD-16)	1
32	590188	Hair Clip Pin, 3/32" (AK-2705)	1
33	814543	Strap, Cylinder Stabilizer	1
34	2502007	Washer, 5/8" Springlock	6
35	2500013	Nut, 5/8" - 11 NC Full Hex	6
36	814408	Bracket, Spring Anchor (Top)	1
37	2503201	Bolt, 3/8" - 16 NC x 2 1/4" Hex Head, Gr.5	1
38	2501004	Washer, 3/8" Flat	1
70	814476	Post Holder with Handle	1
71	2504129	Handle, Post Holder	1
72	101056	Safety Sign - Safety Instructions	1
73	101057	Safety Sign - Warning (Set Brake Securely)	1
74	101058	Safety Sign - Warning (Avoid Serious Injury)	1
75	101078	Safety Sign - Caution (Safety Glasses)	1
76	101027	Safety Sign - Warning (Stand Clear)	1
77	101079	Safety Sign - Notice (1/2 Turn Loose)	1
78	101080	Safety Sign - Notice (1/2 Turn Loose)	1
NS	SW700	Safety Sign - Warning (High Pressure Fluid)	1
88	814581	Pipe, Plastic Stabilizing	2

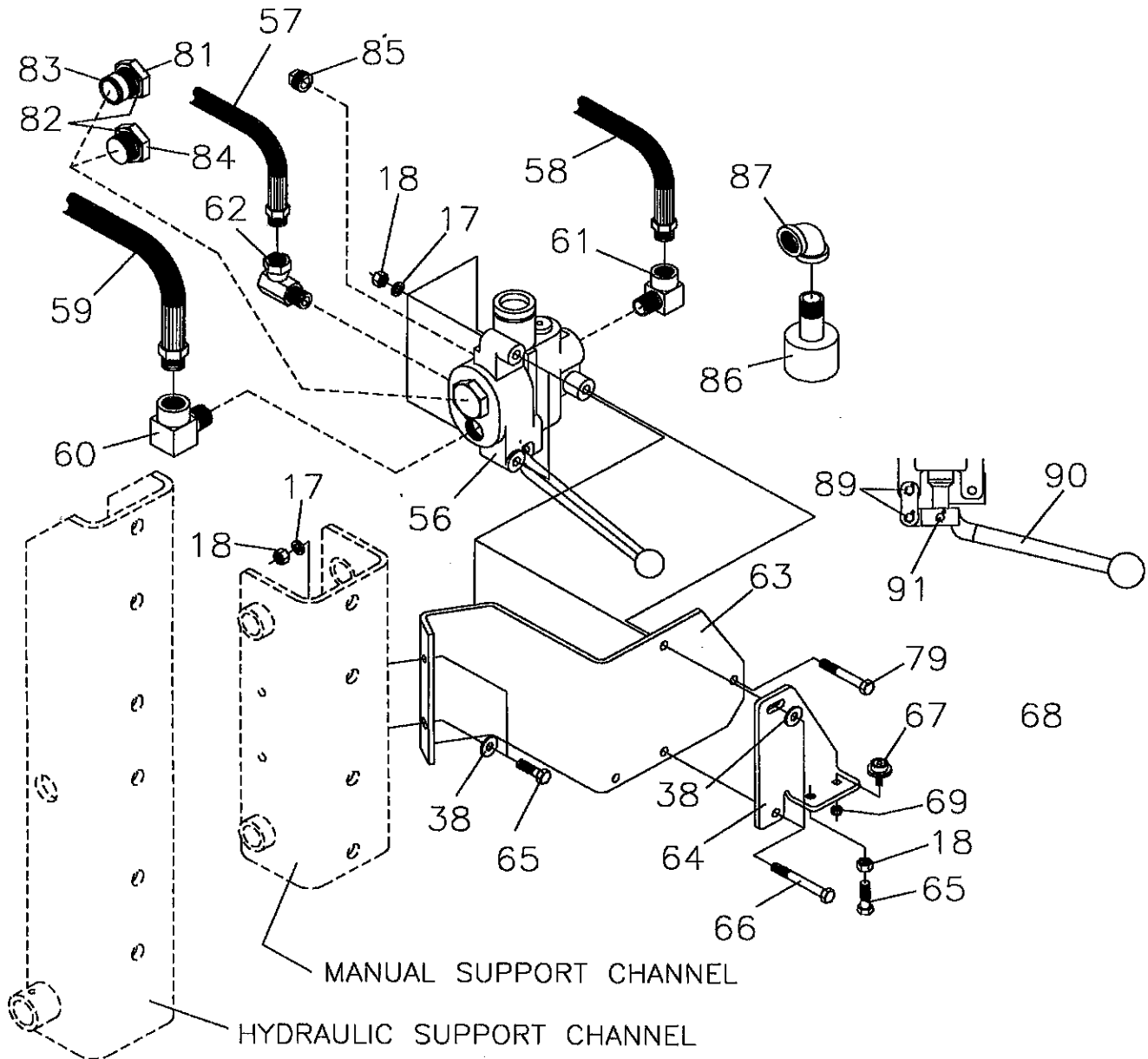
# HPD-20 PARTS LIST



REF. NO.	PART NO.	DESCRIPTION	NO. REQ.
1	814502	Driving Ram (HPD-20)	1
2	814551	Channel Guide	8
3	2504132	Machinery Bushing, 18 ga. 1" I.D.	Var.
4	2504110	Machinery Bushing, 14 ga. 1" I.D.	Var.
6	814510 814516	Carriage Weldment (HPD-20) Complete Cylinder Assembly (includes Items 7 thru 15)	1
7	814517	Tube, Hydraulic Cylinder (HPD-20)	1
8	814520	Rod, Hydraulic Cylinder (HPD-20)	1
9	814422	Rod Guide, Hydraulic Cylinder	1
10	814538	End Cap with Rod Seal (HPD-20)	1
11	814523	Rod Seal (only) (HPD-20)	1
12	2500054	Nut, 1/2" - 13 NC Stamplock Hex	5
13	814524	Nut, 1" - 14 NF (Drilled & Tapped)	1
14	2503196	Set Screw, 1/4" - 20 NC x 1/8"	1
15	2500057	Nut, 1" - 14 NF Nylock Hex	1
16	814426	Bumper, Urethane	4
17	2502008	Washer, 3/8" Springlock	4
18	2500004	Nut, 3/8" - 16 NC Full Hex	4
19	814525	Bracket, Transport Lock (HPD-20)	1
20	814527	Bracket, Lower Spring (HPD-20)	1
21	2503202	Bolt, 1/2" - 13 NC x 2 1/2" Hex Head, Grade 8, Full Thread	2
22	814532	Damper, Spring (Urethane)	1
23	814530	Spring, Driving Ram (HPD-20)	2
24	814531	Clip, Spring (HPD-20)	4

REF. NO.	PART NO.	DESCRIPTION	NO. REQ.
25	814533	Rubber Guard (HPD-20)	1
26	814534	Guard Retainer (HPD-20)	1
27	2503110	Bolt, 5/16" - 18 NC x 1" Carriage Head	6
28	2500011	Nut, 5/16" - 18 NC Full Hex	6
29	2502011	Washer, 5/16" Springlock	6
30	2501012	Washer, 5/16" Flat	4
31	814536	Pin, Transport Lock (HPD-20)	1
32	590188	Hair Clip Pin, 5/32" (AK-2705)	1
33	814543	Strap, Cylinder Stabilizer	1
34	2502007	Washer, 3/8" Springlock	6
35	2500013	Nut, 5/8" - 11 NC Full Hex	6
36	814408	Bracket, Spring Anchor (Top)	1
38	2501004	Washer, 3/8" Flat	1
66	2503072	Bolt, 3/8" - 16 NC x 3" Hex Head Gr. 5	1
70	814476	Post Holder with Handle	1
71	2504129	Handle, Post Holder	1
72	101056	Safety Sign - Safety Instructions	1
73	101057	Safety Sign - Warning (Set Brake Securely)	1
74	101058	Safety Sign - Warning (Avoid Serious Injury)	1
75	101078	Safety Sign - Caution (Safety Glasses)	1
76	101027	Safety Sign - Warning (Stand Clear)	1
77	101079	Safety Sign - Notice (1/2 Turn Loose)	1
78	101080	Safety Sign - Notice (1/2 Turn Loose)	1
NS	SW700	Safety Sign - Warning (High Pressure Fluid)	1
80	2500055	Nut, 3/8" - 16 NC Stamplock Hex	1
88	814547	Plastic Pipe, 3/4"	2

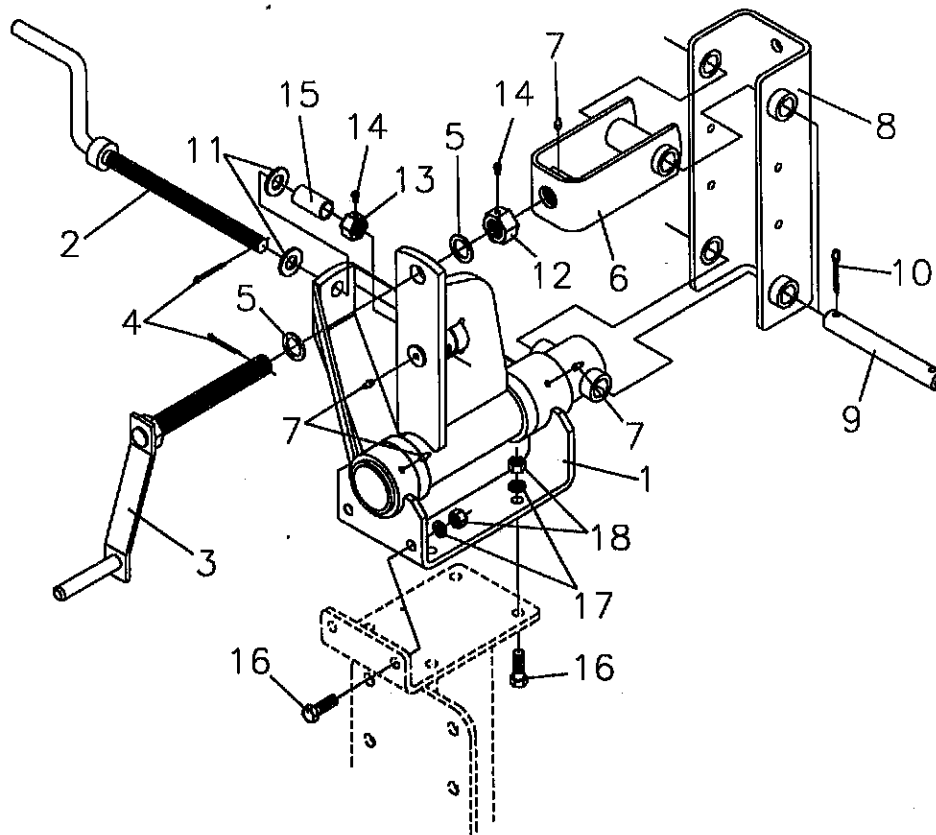
# HYDRAULIC CONTROL VALVE AND MOUNTING BRACKET



REF. NO.	PART NO.	DESCRIPTION	NO. REQ.
17	2502008	Washer, $\frac{3}{8}$ " Springlock	5
18	2500004	Nut, $\frac{3}{8}$ " - 16 NC Full Hex	6
38	2501004	Washer, $\frac{3}{8}$ " Flat	2
56	814473	Valve, Hydraulic	1
57	2504125	Hose, Cylinder $\frac{3}{4}$ " I.D. x 24" Dbl. Braid	1
58	2505574	Hose, Pressure, $\frac{3}{8}$ " I.D. x 216" Dbl. Braid	1
59	2505568	Hose, Return, 1" I.D. x 216" Sngl. Braid	1
60	2504128	Elbow, Street, $\frac{3}{4}$ " NPT 90°	1
61	2505503	Elbow, Street, $\frac{1}{2}$ " to $\frac{3}{4}$ " NPT 90°	1
62	2504180	Elbow, 90° Swivel $\frac{1}{2}$ "	1
63	814474	Bracket, Valve Mount	1
64	814475	Stop, Valve Handle	1
65	2503020	Bolt, $\frac{3}{8}$ " - 16 NC x $1\frac{1}{4}$ " Hex Head	3
66	2503072	Bolt, $\frac{3}{8}$ " - 16 NC x 3" Hex Head Gr. 5	2
67	814489	Level Assembly	1
69	2500006	Nut, $\frac{1}{4}$ " - 20 NC Nylock Hex	1

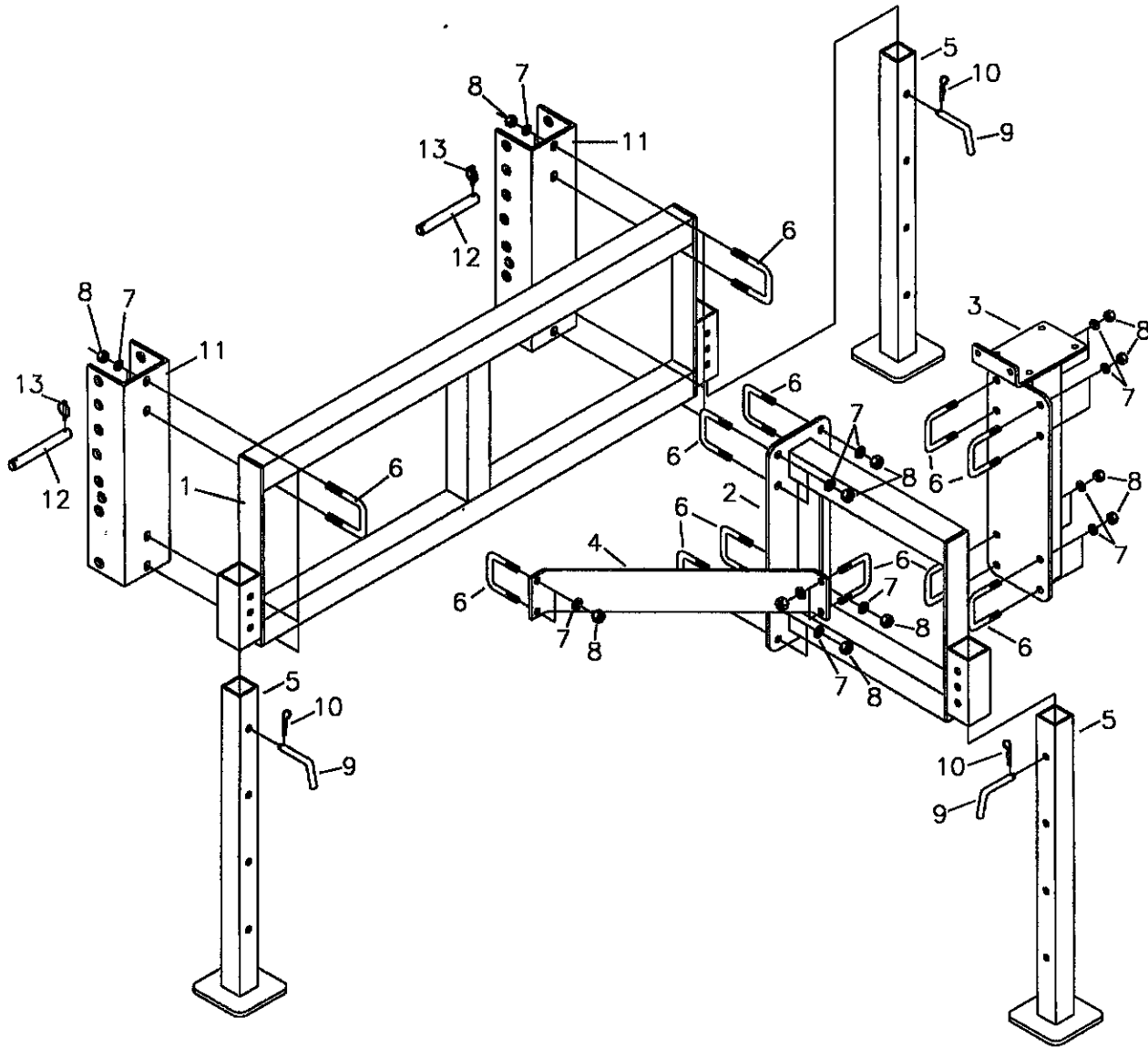
REF. NO.	PART NO.	DESCRIPTION	NO. REQ.
79	2503205	Bolt, $\frac{3}{8}$ " - 16 NC x $2\frac{1}{2}$ " Hex Head Gr. 5	1
81	2504135	Kit, Closed-Center Plug (Contains Items 82 and 83)	1
82	2504136	Seal, Hydraulic Valve Plug	1
83	2504137	Seal, Quad	1
84	2504138	Kit, Open-Center Plug (Contains Item 82)	1
85	2504133	Pipe Plug, $\frac{1}{2}$ " Socket Head	1
86	814496	Return Adapter	1
87	2504139	Elbow, 90° $\frac{3}{4}$ " NPT - Black Pipe	1
89	814541	Link Assembly, Handle (Side Plate, Link Pin & Cotter Pins)	1
90	814593	Handle, Valve	1
91	814589	Pin, Handle (Pin & Cotter Pin)	1
NS	814552	Spring To Center Kit (Valve)	1
NS	814594	Rubber Bonnet, Valve	1

# ADJUSTABLE MANUAL BASE MOUNTING PACKAGE



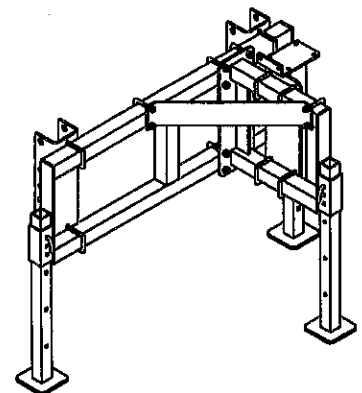
REF. NO.	PART NO.	DESCRIPTION	NO. REQ.
1	814438	MANUAL PIVOT WELDMENT	1
2	814450	SIDE TILT CRANK (3/4"-10NC THREADS)	1
3	814453	FORE & AFT CRANK (1"-8NC THREADS)	1
4	2504015	COTTER PIN 1/8" x 1 1/2"	2
5	2504110	MACHINERY BUSHING 1" ID x 14 GA.	2
6	814457	CLEVIS WELDMENT	1
7	2504049	DRIVE ZERK 5/16"	4
8	814460	SUPPORT CHANNEL WELDMENT	1
9	830309	LIFT PIN 1" DIA. x 8" LG.	2
10	2504068	COTTER PIN 1/4" x 1 3/4"	4
11	2504149	MACHINERY BUSHING 3/4" ID x 10 GA.	2
12	814463	NUT 1"-8NC FULL HEX (DRILLED & TAPPED)	1
13	814425	NUT 3/4"-10NC FULL HEX (DRILLED & TAPPED)	1
14	2503196	SET SCREW 1/4"-20NC x 1/4"	2
15	590027	TOPLINK BUSHING (AK-54)	1
16	2503145	BOLT 1/2"-13NC x 1 1/2" HEX HEAD GR. 5	6
17	2502002	WASHER 1/2" SPRINGLOCK	6
18	2500003	NUT 1/2"-13NC FULL HEX	6

# MANUAL FRONT LOADER MOUNT PARTS LIST

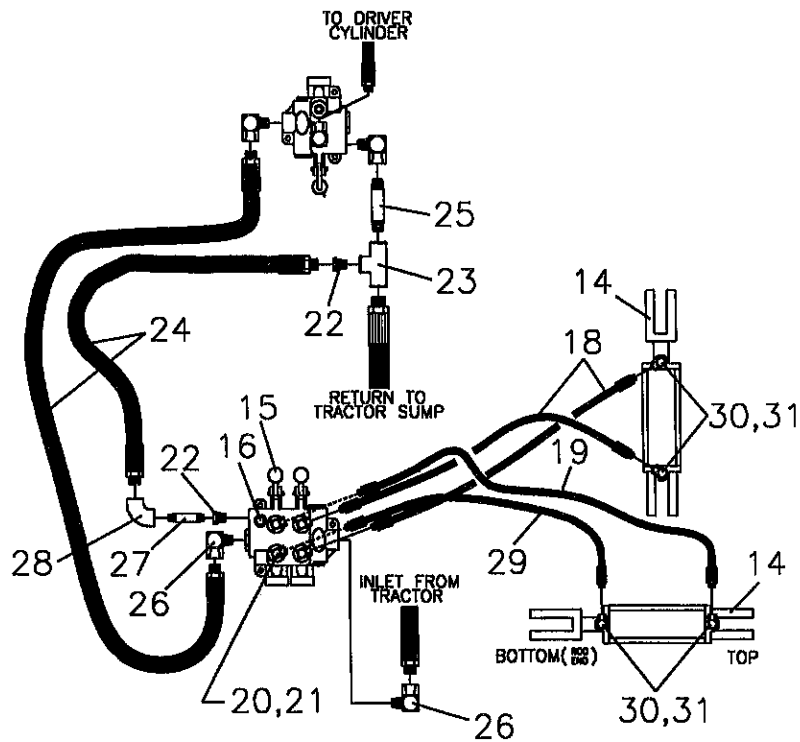
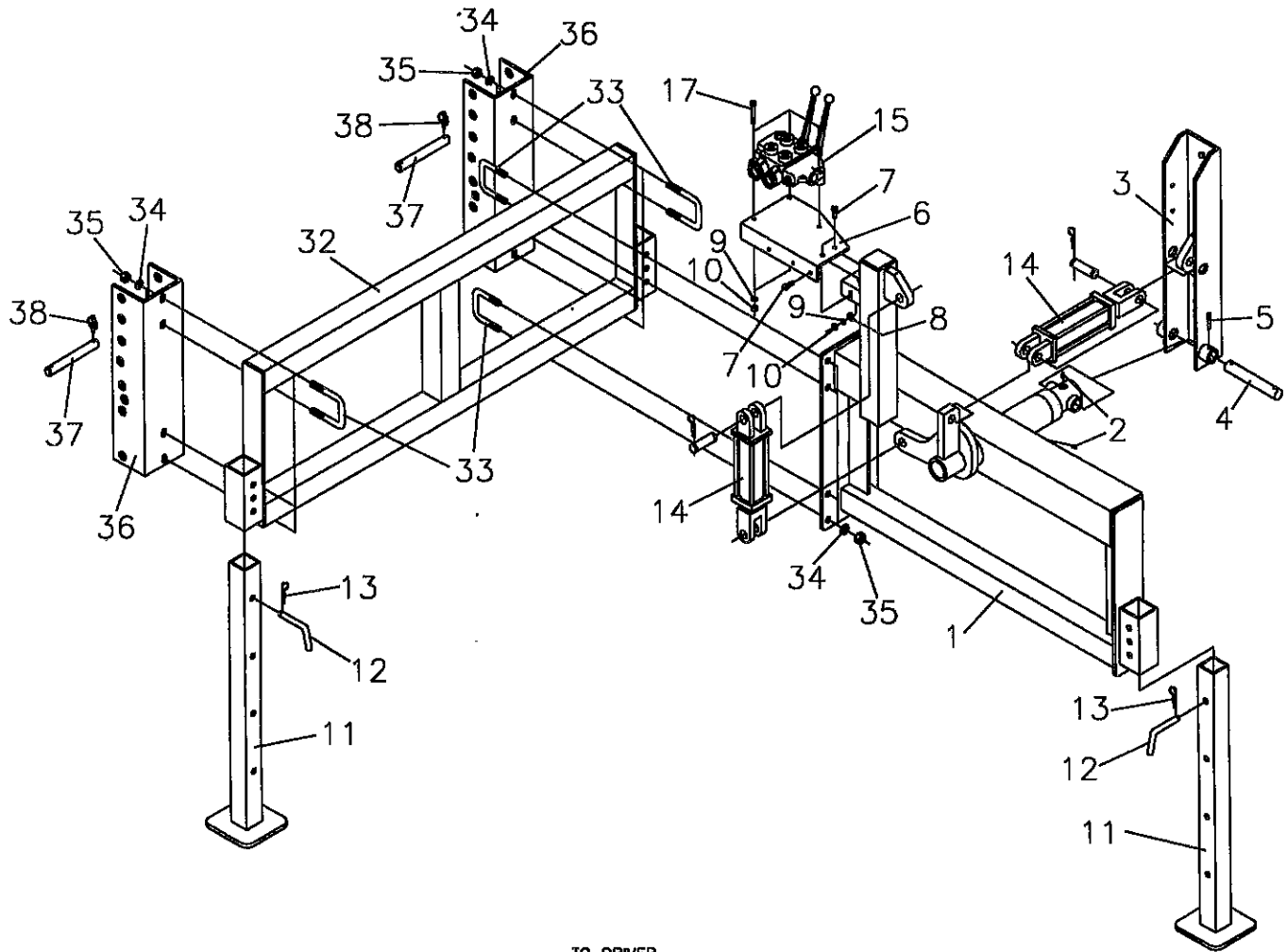


REF. NO.	PART NO.	DESCRIPTION	NO. REQ.
1	814323	MAIN FRAME WELDMENT	1
2	814324	BRACKET ARM	1
3	814328	MOUNT WELDMENT	1
4	814327	REINFORCING BAR	1
5	814687	STAND WELDMENT	3
6	830214	U-BOLT, 5/8"-11NC x 3" ID	14
7	2502007	WASHER, 5/8" SPRING LOCK	28
8	2500013	NUT, 5/8"-11NC, HEX	28
9	803637	PIN, SHIFT W/HOLE	3
10	590187	AK-2704 HAIR CLIP PIN	3
11	830317	*LIFT BRACKET, STANDARD	2
12	830309	PIN, LIFT (1" DIA. x B")	4
13	590034	LINCH PIN 1/4" (AK-61)	8
N/S	2505544	TIE WRAP	12

\*NOTE: OPTIONAL QUICK ATTACH LOADER BRACKETS ARE AVAILABLE



# HYDRAULIC FRONT LOADER MOUNT PARTS DRAWING



## HYDRAULIC FRONT LOADER MOUNT PARTS LIST

REF NO.	PART NO.	DESCRIPTION	NO. REQ.
1	814836	HFL Frame Weldment	1
2	2504049	Drive Zerk 5/16"	2
3	814725	Support Channel Weldment	1
4	830334	Lift Pin 1 1/4" x 8"	1
5	2504070	Roll Pin 5/16" x 2"	1
6	814729	Valve Mount (2 Spool)	1
7	2503011	Bolt 3/8"-16NC x 1" Hex Head	3
8	2501004	Washer 3/8" Flat	3
9	2502008	Washer 3/8" Springlock	6
10	2500004	Nut 3/8"-16NC Full Hex	6
11	814687	Stand Weldment	3
12	803637	Stand Pin	3
13	590187	Hair Clip Pin (AK-2704)	3
14	2504097	Hydraulic Cylinder 3 x 6	2
15	814734	Valve, 2-Spool	1
16	2505550	Pipe Plug 3/4" NPT Sq. Head	1
17	2503039	Bolt 3/8"-16NC x 2 1/2" Hex Head	3
18	2505505	Hydraulic Hose 1/4" ID x 36"	2
19	2505506	Hydraulic Hose 1/4" ID x 30"	1
20	2505507	Reducer Bushing 1/2" to 1/4"	4
21	2505508	Elbow, 90° Street 1/4" NPT	4
22	2504119	Reducer Fitting 3/4"-1/2" NPT	2
23	2505509	Pipe Tee 3/4" NPT Blackpipe	1
24	2505516	Hydraulic Hose 3/8" ID x 36"	2
25	2505511	Pipe Nipple 3/4" x 3"	1
26	2505503	Elbow, Street 3/4" to 1/2"	2
27	2505512	Pipe Nipple 1/2" x 2"	1
28	2505513	Elbow, 90° 1/2" NPT	1
29	2505514	Hydraulic Hose 1/4" ID x 24"	1
30	2505515	Reducer w/.040 Orifice	4
31	2505530	Elbow 90° Swivel 1/4"-18 NPT	4
32	814323	Main Frame Weldment	1
33	830214	U-Bolt 5/8"-11NC 3" x 4 1/2"	8
34	2502007	Washer 5/8" Springlock	16
35	2500013	Nut 5/8"-11NC Full Hex	16
36	830317	Lift Bracket	2
37	830309	Lift Pin 1" x 8"	4
38	590034	Linch Pin 1/4" (AK-61)	8
N/S	2505544	Tie Wrap	12